

# NEW OPPORTUNITY

## for Pennsylvania Substance Abuse Prevention Coalitions to Increase Member Engagement and Positive Impact on Youth Behavior

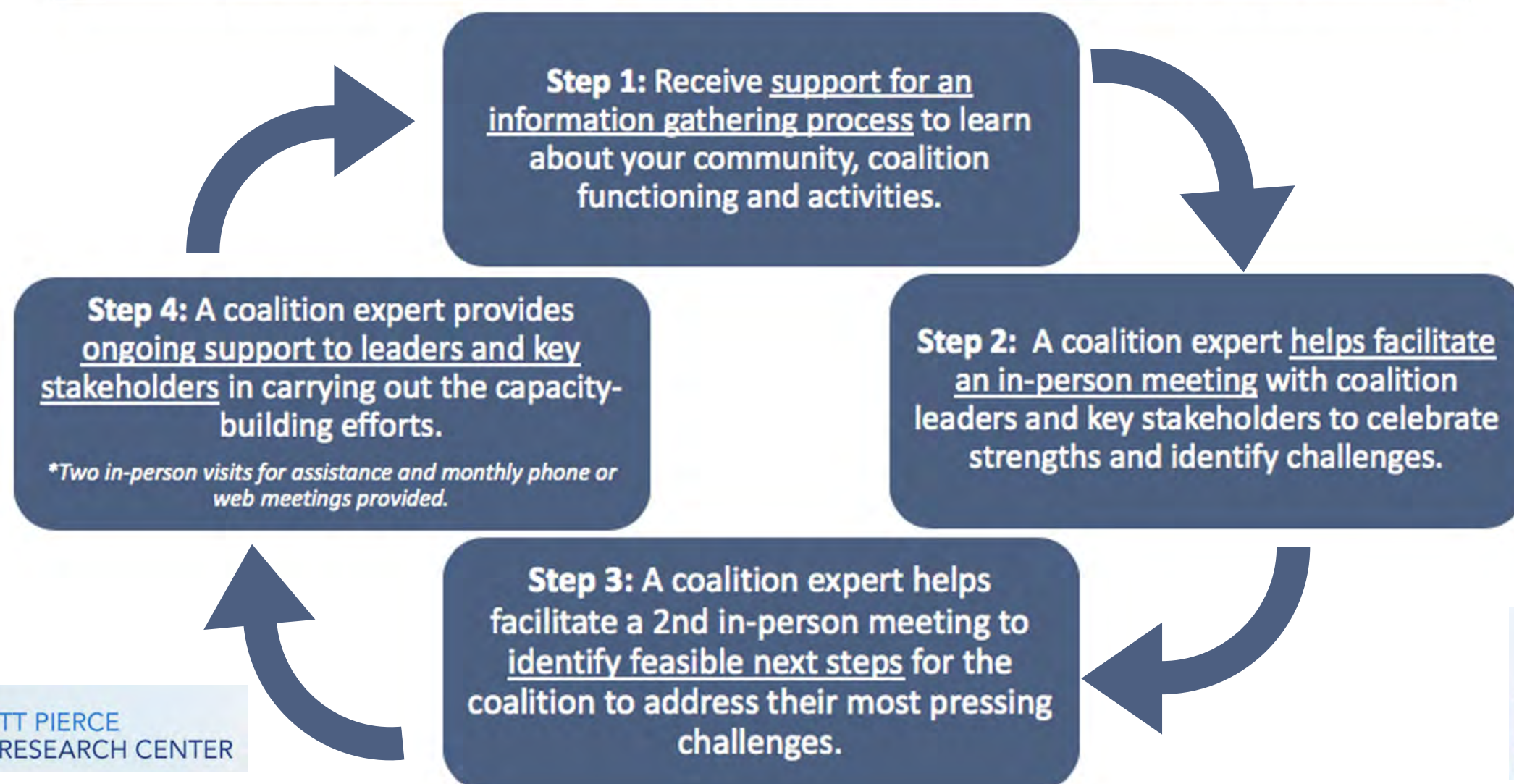
### ABOUT THE OPPORTUNITY:

This is a special invitation for the chance to receive three years of customized support from coalition experts to increase member participation and streamline your work to focus on activities that will have the biggest impact on youth substance abuse outcomes. Other benefits may include increasing connections to coalition networks and accessing additional relevant resources.

### CONTACT US TODAY!

Have questions? Want to learn more?  
Interested in signing up? Please reach out to:  
Sarah Chilenski, Ph.D.  
Research Associate Professor  
Prevention Research Center  
P: 314-599-3737, E: sem268@psu.edu

#### Coalition Check-Up Annual Process for Increasing Coalition Capacity to Prevent Youth Substance Use



 PennState  
College of Health and Human Development

EDNA BENNETT PIERCE  
PREVENTION RESEARCH CENTER



### FREQUENTLY ASKED QUESTIONS:

#### ARE THERE PREREQUISITES FOR PARTICIPATION?

The only requirement is that you meet regularly as a group to identify and plan substance abuse prevention efforts. This is an opportunity to receive personalized expert support at whatever stage your coalition is at.

#### WHAT IS THE TIME COMMITMENT?

We anticipate that coalitions selected to receive the technical assistance will spend approximately 20 hours annually in direct project participant activities. This includes participation in meetings, phone calls, and other communications with the technical assistance provider, as well as time spent in the initial information gathering process. This minimal investment of time will improve your coalition's overall efficiency and resource management, and will align with your coalition's goals and objectives.

#### HOW WILL THIS PROJECT FIT INTO OUR CURRENT PLANS?

The aim of the Coalition Check-Up isn't to give your coalition more work to do. On the contrary, it is intended to help your coalition identify the programs and initiatives that are most likely to reduce youth substance abuse, increase member participation, and improve coalition functioning and effectiveness.

#### HOW WILL THIS AFFECT THE TECHNICAL ASSISTANCE WE ALREADY RECEIVE?

Your participation in this project will not get in the way of the technical assistance you already receive, whether that is from the EPISCenter, or another regionally-based provider. We will work in close collaboration with existing providers so that the Coalition Check-Up specific support connects to the work you are already doing to ensure a seamless experience.

#### WHAT IF WE AREN'T SURE WHAT OUR COALITION WILL BE DOING FOUR YEARS FROM NOW?

We expect that over the course of this project, your coalition staff, volunteers, key leaders and partners will undergo change. Building your coalition's capacity to sustain the work during those transitions is a primary goal of the Coalition Check-Up technical assistance system.